

6

5

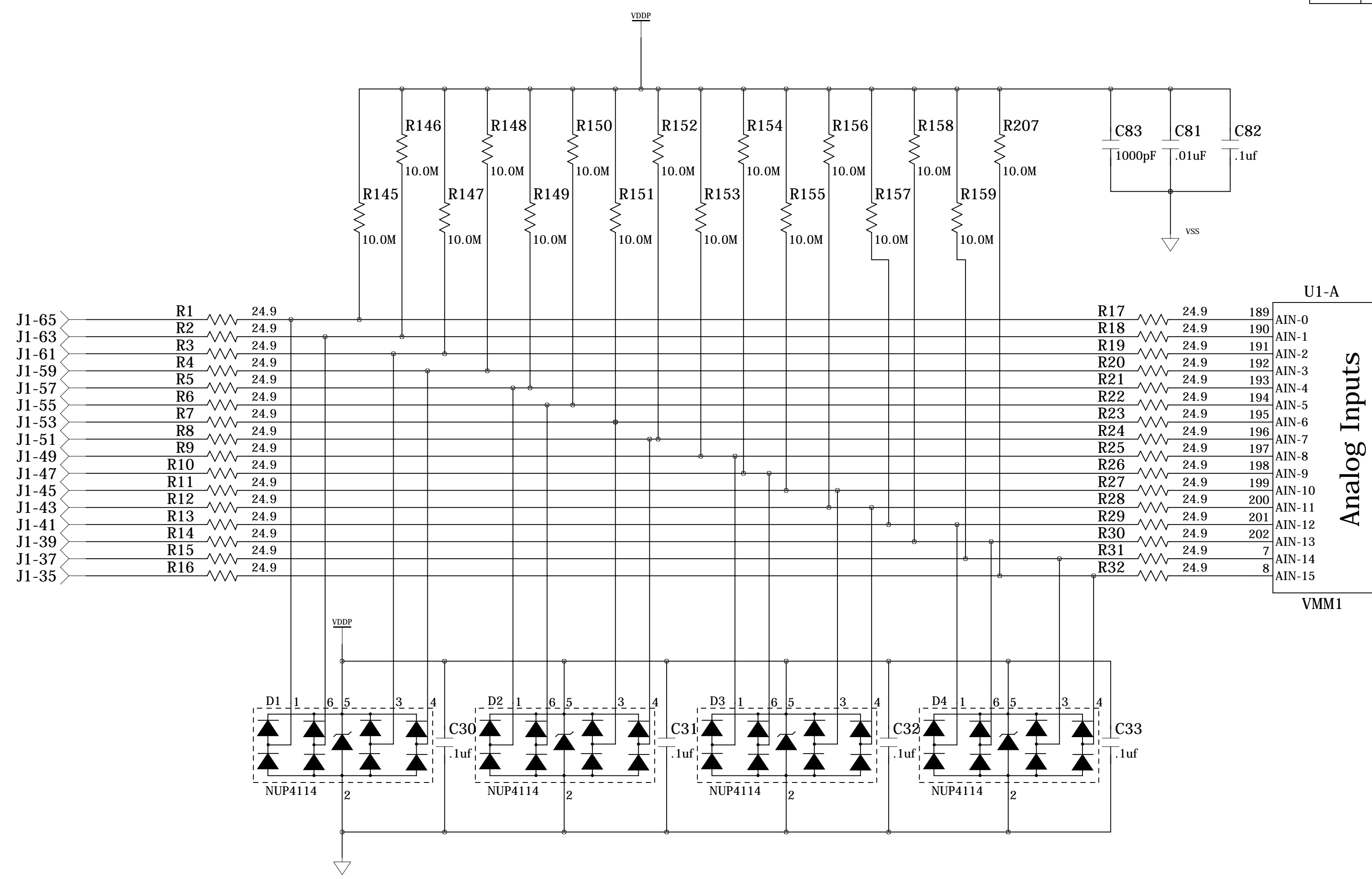
4

3

2

1

REVISION RECORD			
LTR	ECO NO:	APPROVED:	DATE:



U1-A

AIN-0	189
AIN-1	190
AIN-2	191
AIN-3	192
AIN-4	193
AIN-5	194
AIN-6	195
AIN-7	196
AIN-8	197
AIN-9	198
AIN-10	199
AIN-11	200
AIN-12	201
AIN-13	202
AIN-14	7
AIN-15	8

VMM1

Analog Inputs

D

D

C

C

B

B

A

A

b

t

b

COMPANY: **University of Arizona**

TITLE: **Mini-MMFE**

DRAWN: <Drawn By>	DATED: <Drawn Date>
CHECKED: <Checked By>	DATED: <Checked Date>
QUALITY CONTROL: <QC By>	DATED: <QC Date>
RELEASED: <Released By>	DATED: <Release Date>

CODE:	SIZE:	DRAWING NO:	REV:
<Code>	C	PCB-0236	B

6

5

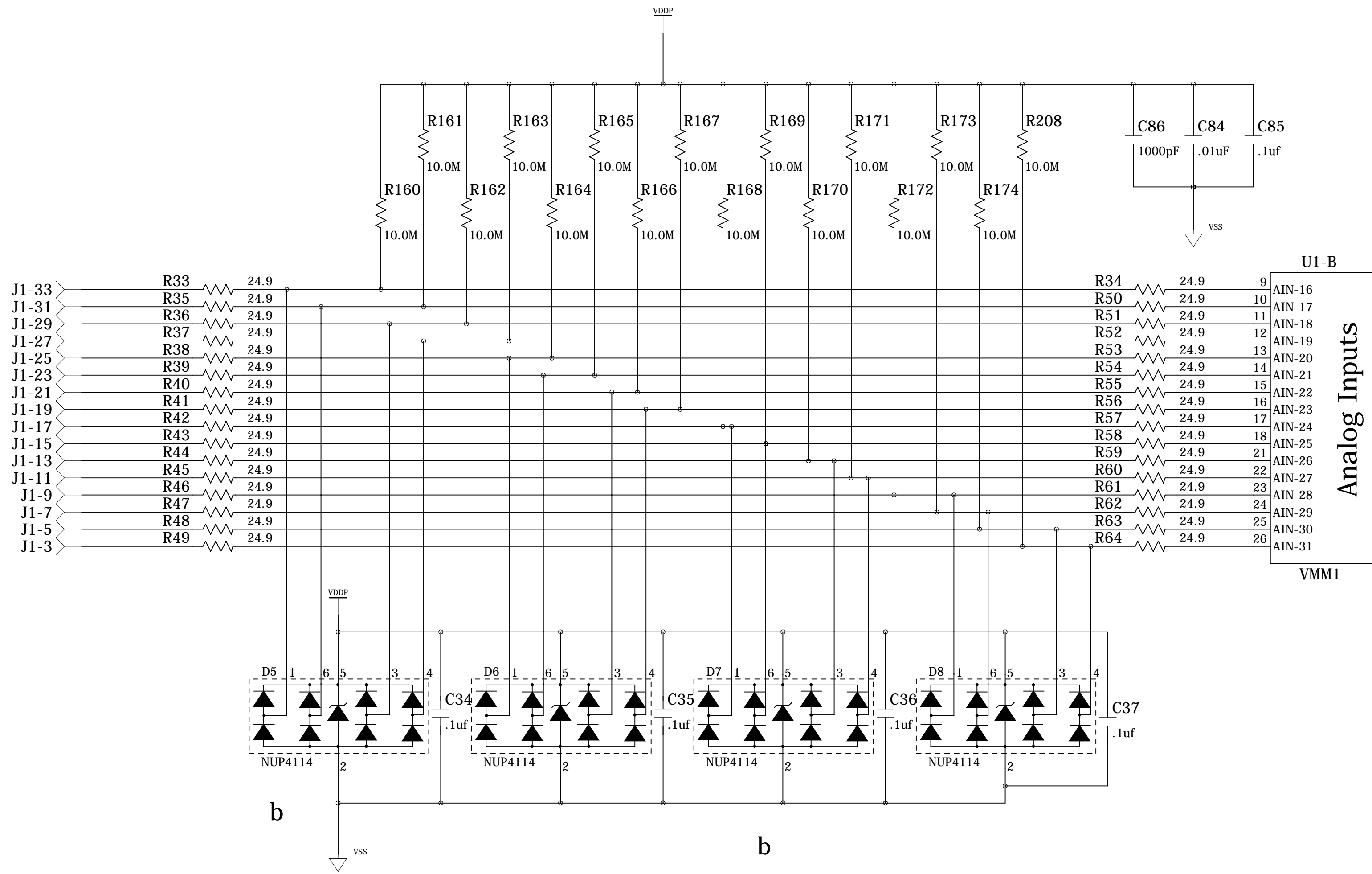
4

3

2

1

REVISION RECORD			
LTR	ECO NO:	APPROVED:	DATE:



U1-B
Analog Inputs
 VMM1

COMPANY: **University of Arizona**

TITLE: **Mini-MMFE**

DRAWN: <Drawn By>	DATED: <Drawn Date>
CHECKED: <Checked By>	DATED: <Checked Date>
QUALITY CONTROL: <QC By>	DATED: <QC Date>
RELEASED: <Released By>	DATED: <Release Date>

CODE: <Code>	SIZE: C	DRAWING NO: PCB-0236	REV: B
------------------------------	-------------------	--------------------------------	------------------

6

5

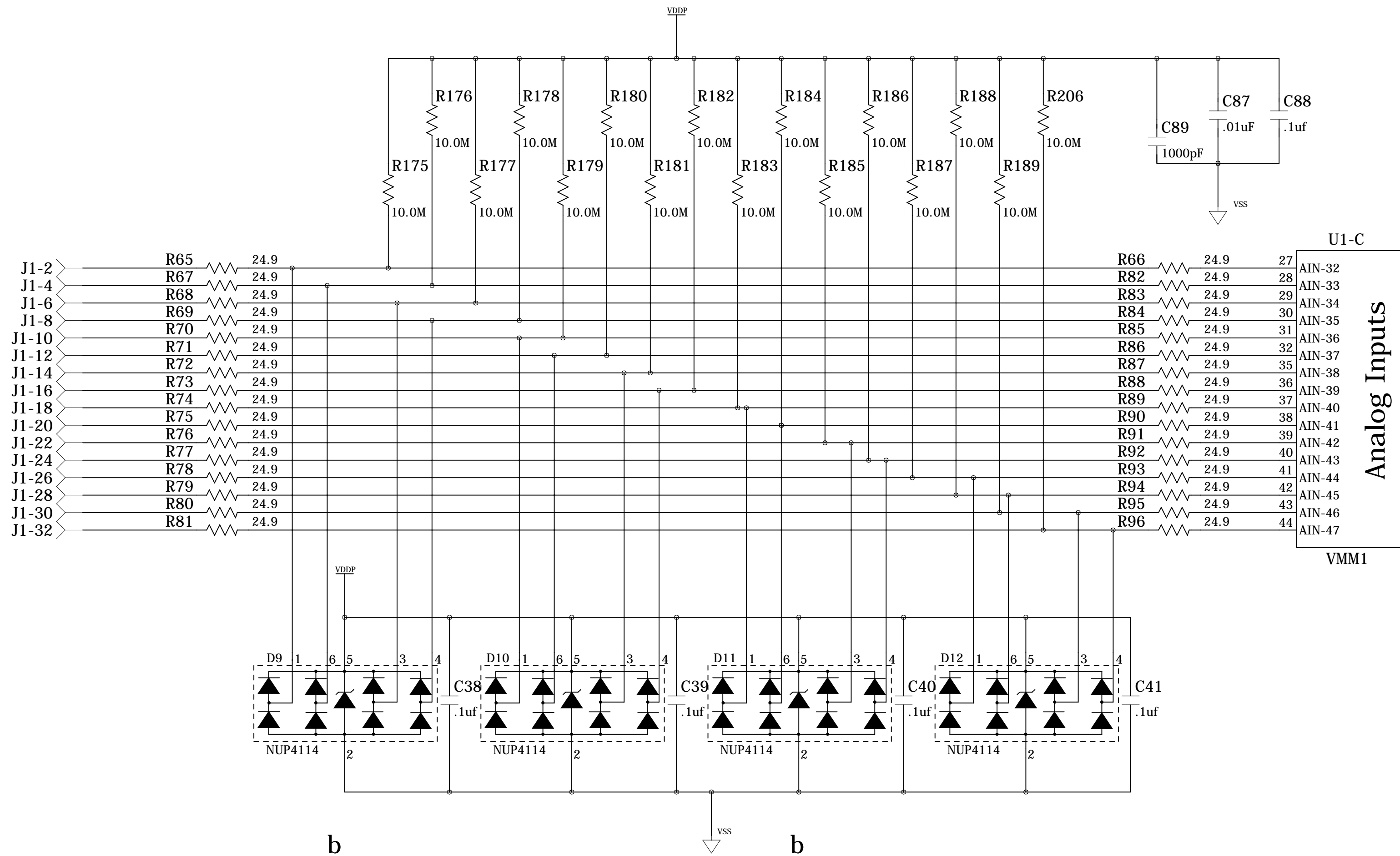
4

3

2

1

REVISION RECORD			
LTR	ECO NO:	APPROVED:	DATE:



U1-C

R66	24.9	27	AIN-32
R82	24.9	28	AIN-33
R83	24.9	29	AIN-34
R84	24.9	30	AIN-35
R85	24.9	31	AIN-36
R86	24.9	32	AIN-37
R87	24.9	35	AIN-38
R88	24.9	36	AIN-39
R89	24.9	37	AIN-40
R90	24.9	38	AIN-41
R91	24.9	39	AIN-42
R92	24.9	40	AIN-43
R93	24.9	41	AIN-44
R94	24.9	42	AIN-45
R95	24.9	43	AIN-46
R96	24.9	44	AIN-47

VMM1

Analog Inputs

COMPANY: University of Arizona			
TITLE: Mini-MMFE			
DRAWN: <Drawn By>	DATED: <Drawn Date>	CODE: <Code>	SIZE: C
CHECKED: <Checked By>	DATED: <Checked Date>	DRAWING NO: PCB-0236	REV: B
QUALITY CONTROL: <QC By>	DATED: <QC Date>	SHEET: 3 of 8	
RELEASED: <Released By>	DATED: <Release Date>	SCALE: <Scale>	

6

5

4

3

2

1

REVISION RECORD			
LTR	ECO NO:	APPROVED:	DATE:

D

D

C

C

B

B

A

A

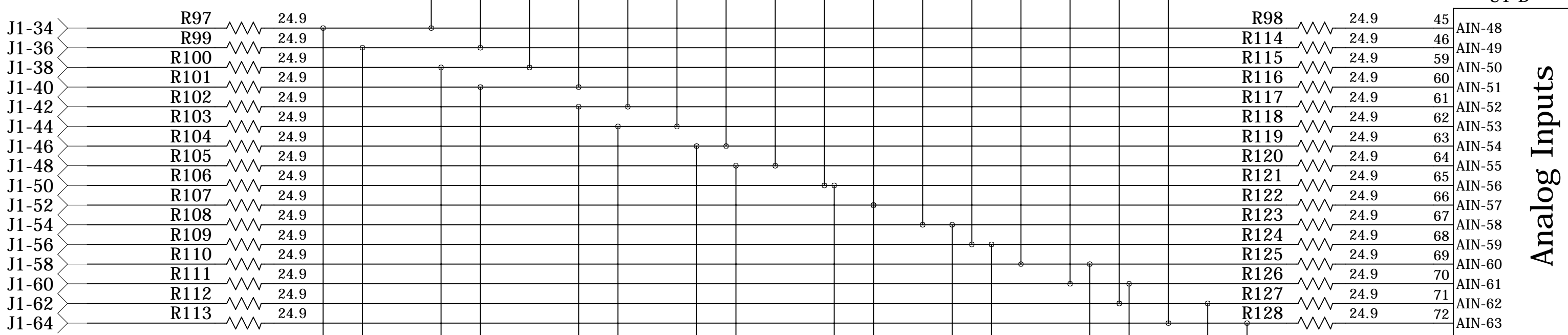
VDDP

VSS

U1-D

VMM1

Analog Inputs

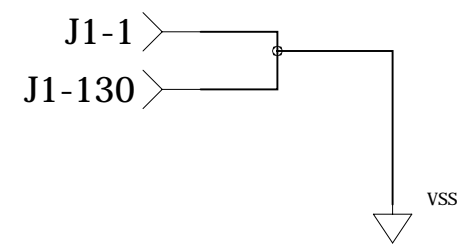
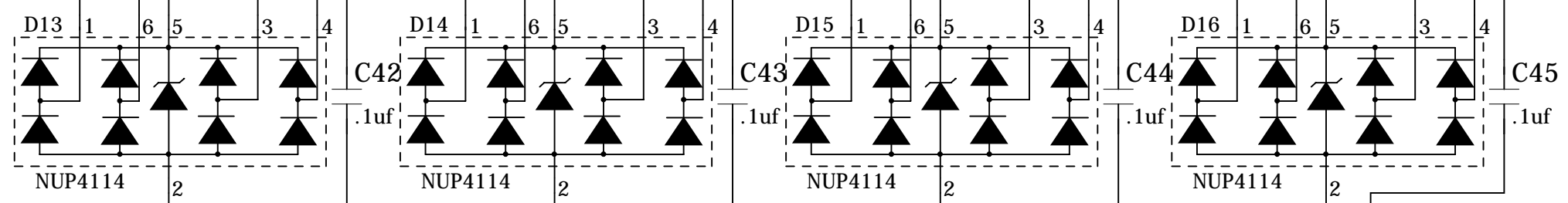


VDDP

b

VSS

b



COMPANY: University of Arizona

TITLE: Mini-MMFE

DRAWN: <Drawn By>	DATED: <Drawn Date>
CHECKED: <Checked By>	DATED: <Checked Date>
QUALITY CONTROL: <QC By>	DATED: <QC Date>
RELEASED: <Released By>	DATED: <Release Date>

CODE:	SIZE:	DRAWING NO:	REV:
<Code>	C	PCB-0236	B
SCALE: <Scale>		SHEET: 4 of 8	

6

5

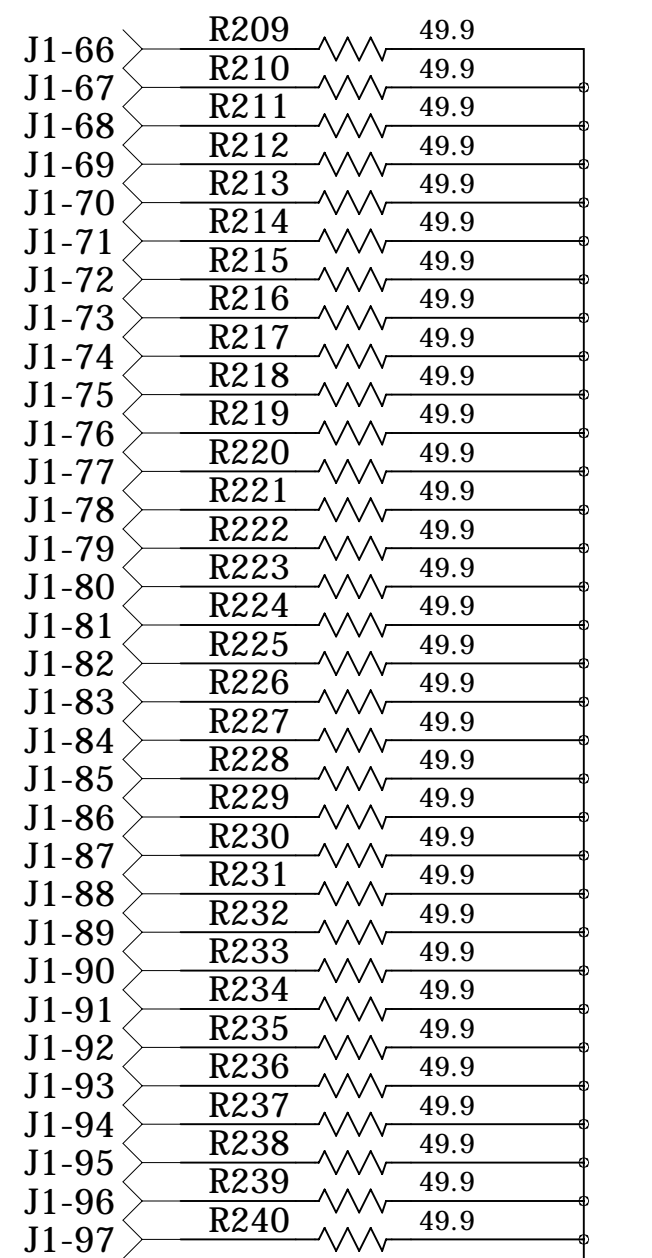
4

3

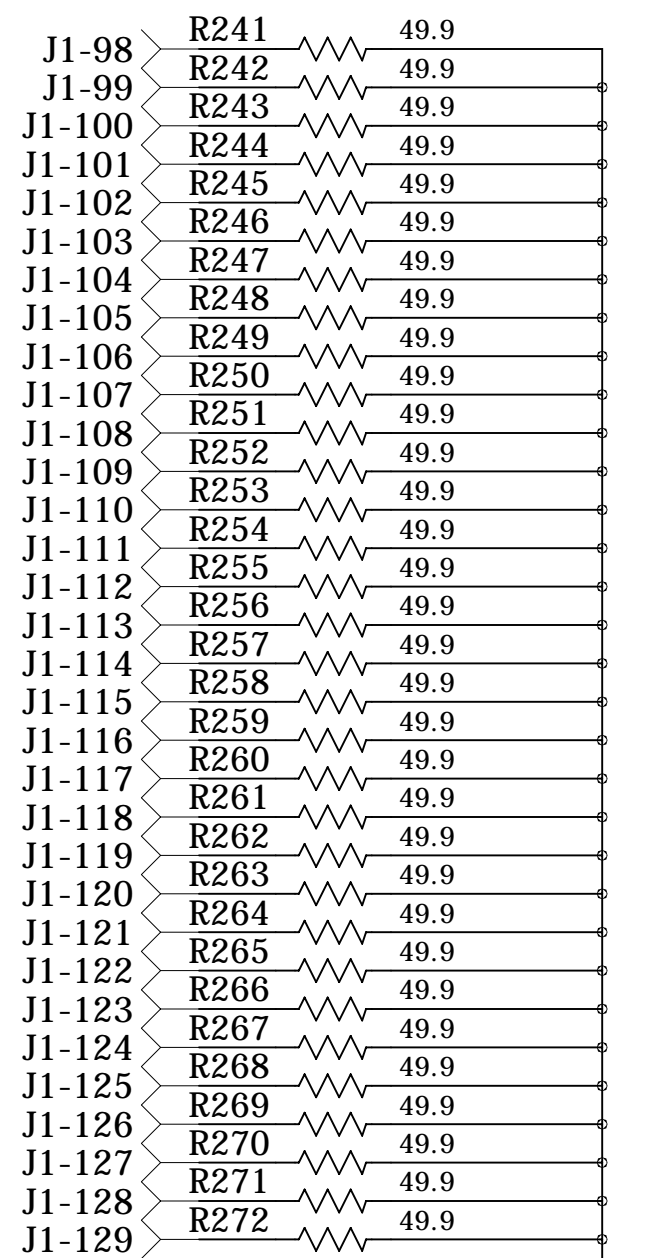
2

1

REVISION RECORD			
LTR	ECO NO:	APPROVED:	DATE:



VSS



VSS

COMPANY: University of Arizona			
TITLE: Mini-MMFE			
DRAWN: <Drawn By>	DATED: <Drawn Date>	CODE:	SIZE: C
CHECKED: <Checked By>	DATED: <Checked Date>	DRAWING NO: PCB-0236	
QUALITY CONTROL: <QC By>	DATED: <QC Date>	REV: B	
RELEASED: <Released By>	DATED: <Release Date>	SCALE: <Scale>	SHEET: 5 of 8

D

D

C

C

B

B

A

A

6

5

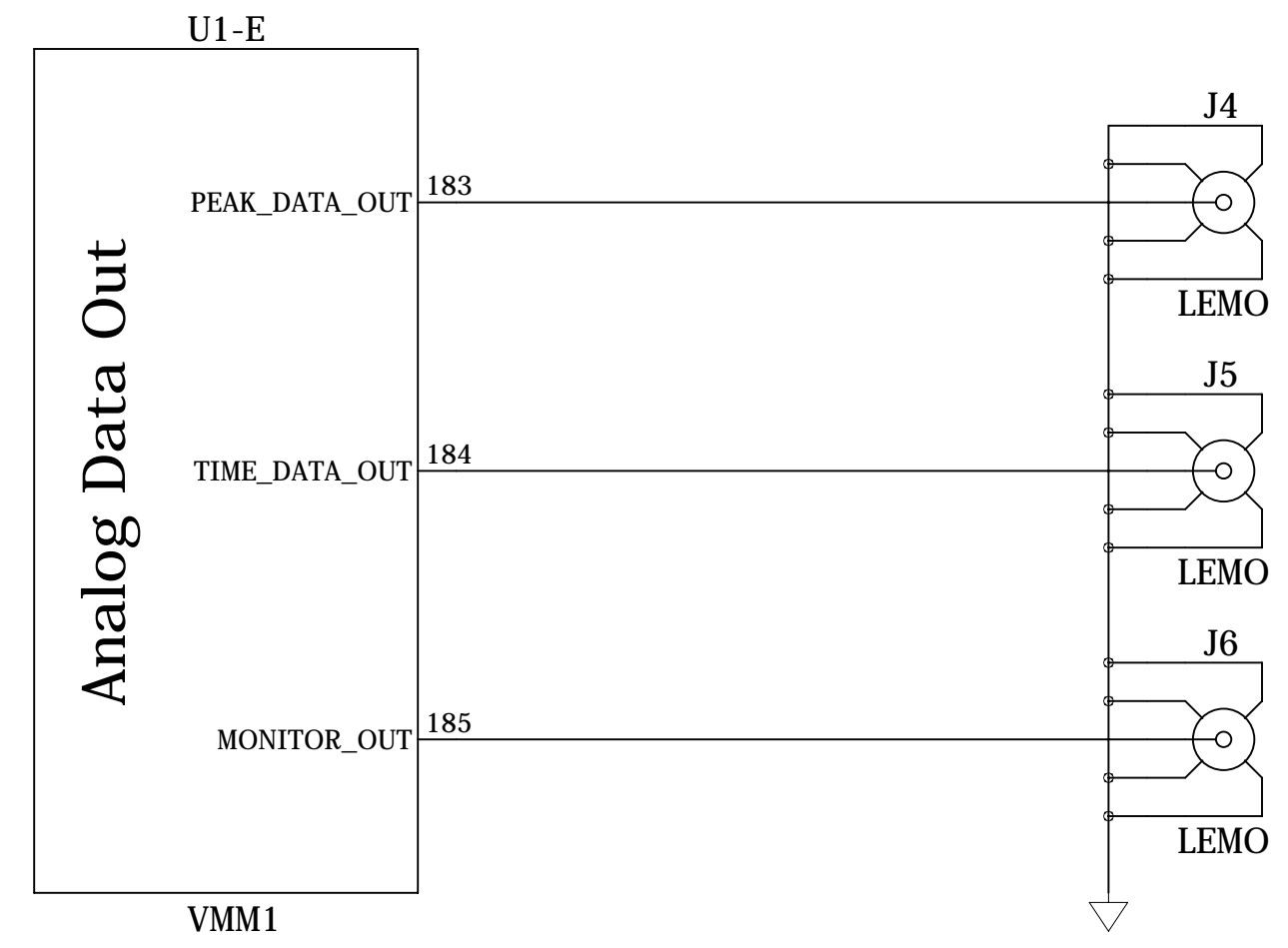
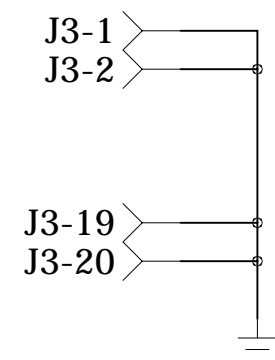
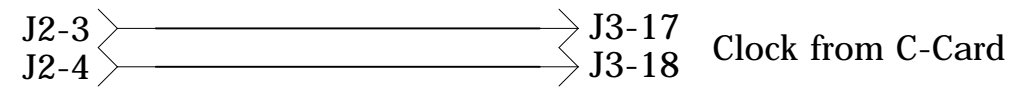
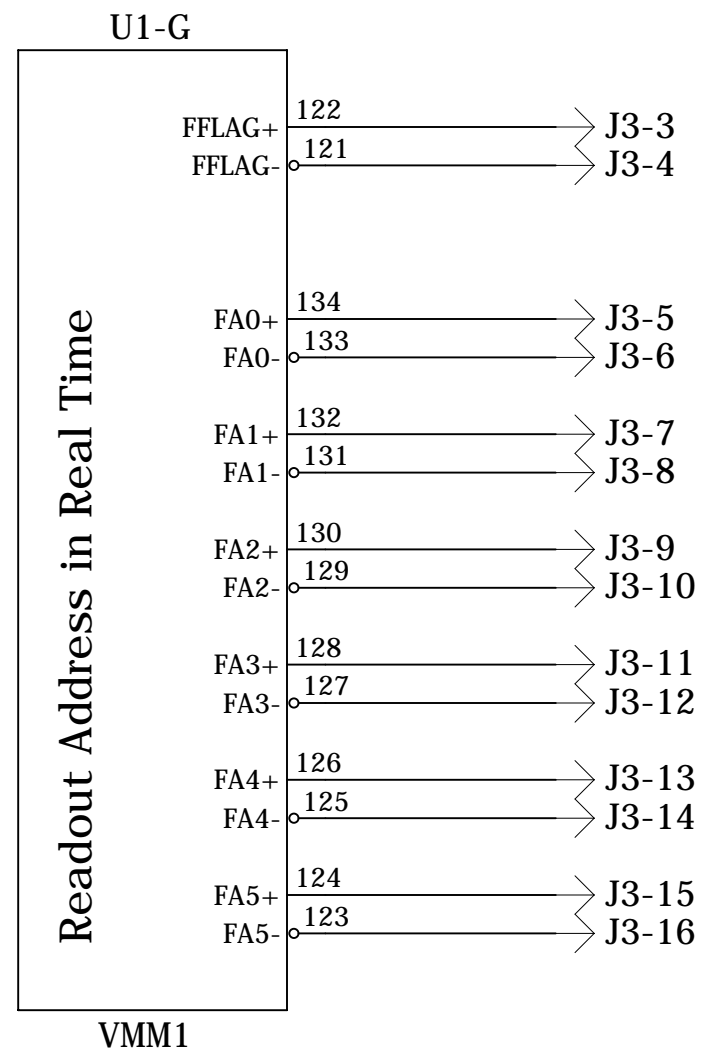
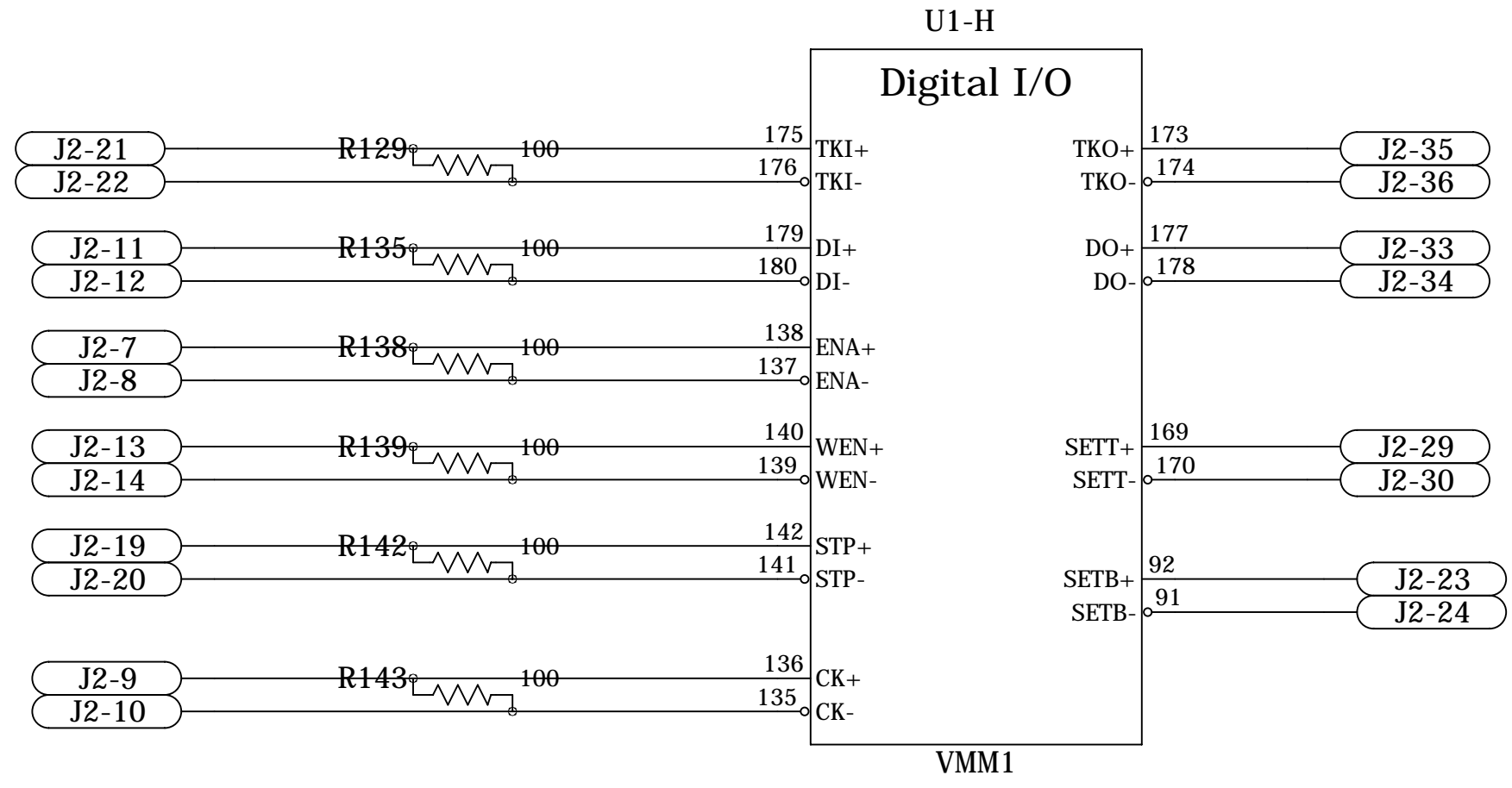
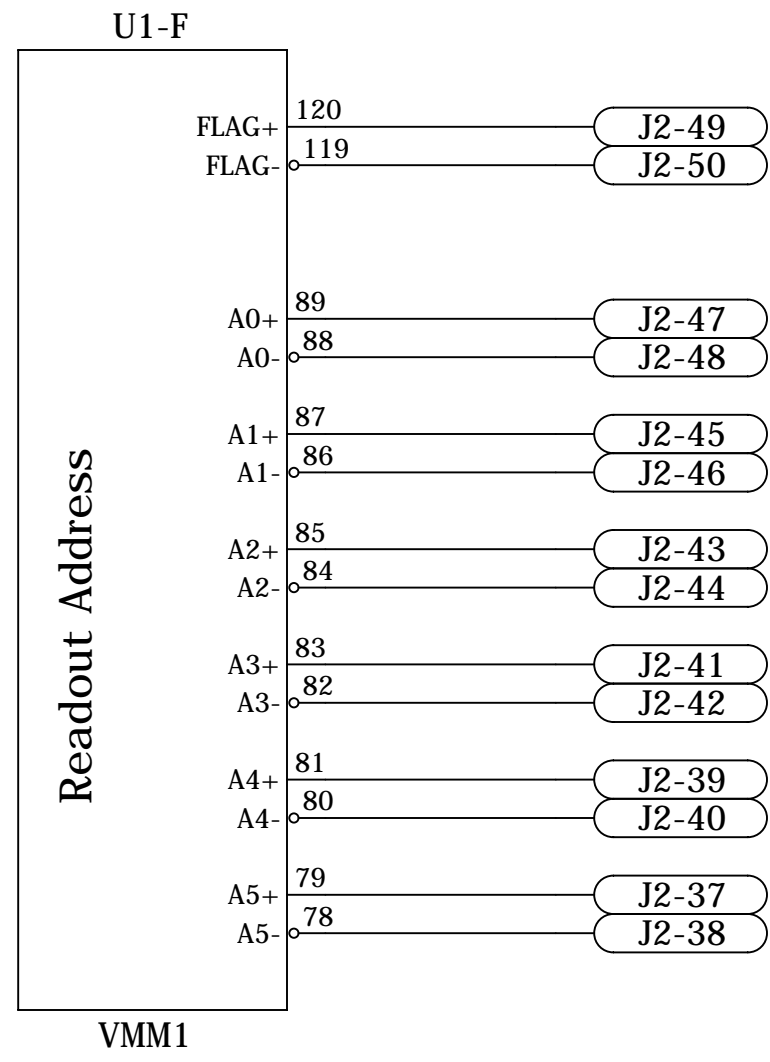
4

3

2

1

REVISION RECORD			
LTR	ECO NO:	APPROVED:	DATE:



COMPANY: **University of Arizona**

TITLE: **Mini-MMFE**

DRAWN: <Drawn By>	DATED: <Drawn Date>
CHECKED: <Checked By>	DATED: <Checked Date>
QUALITY CONTROL: <QC By>	DATED: <QC Date>
RELEASED: <Released By>	DATED: <Release Date>

CODE:	SIZE:	DRAWING NO:	REV:
<Code>	C	PCB-0236	B

6

5

4

3

2

1

REVISION RECORD			
LTR	ECO NO:	APPROVED:	DATE:

D

C

B

A

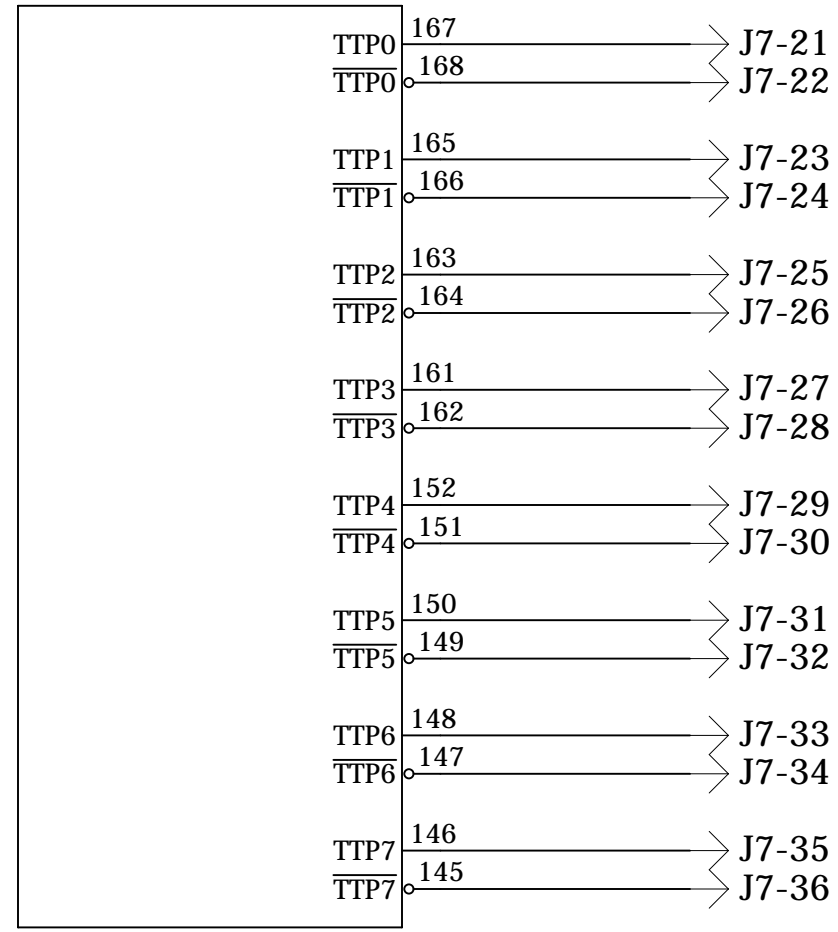
D

C

B

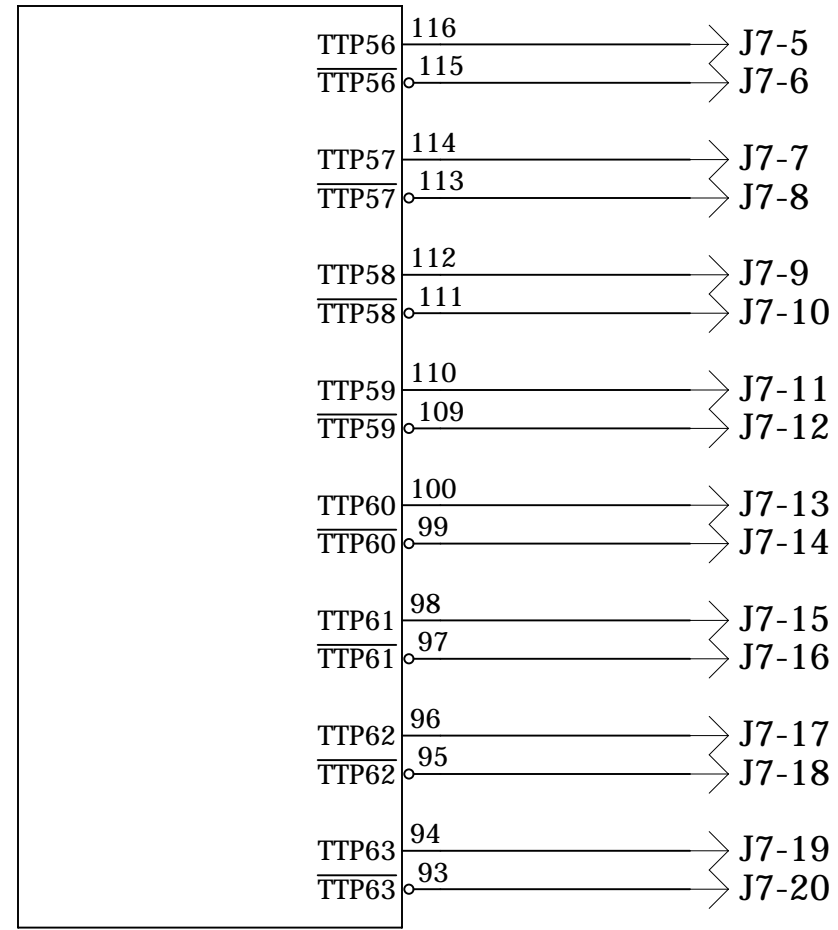
A

U1-J

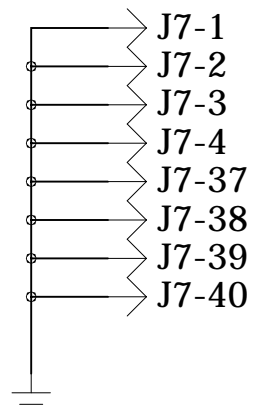


VMM1

U1-K



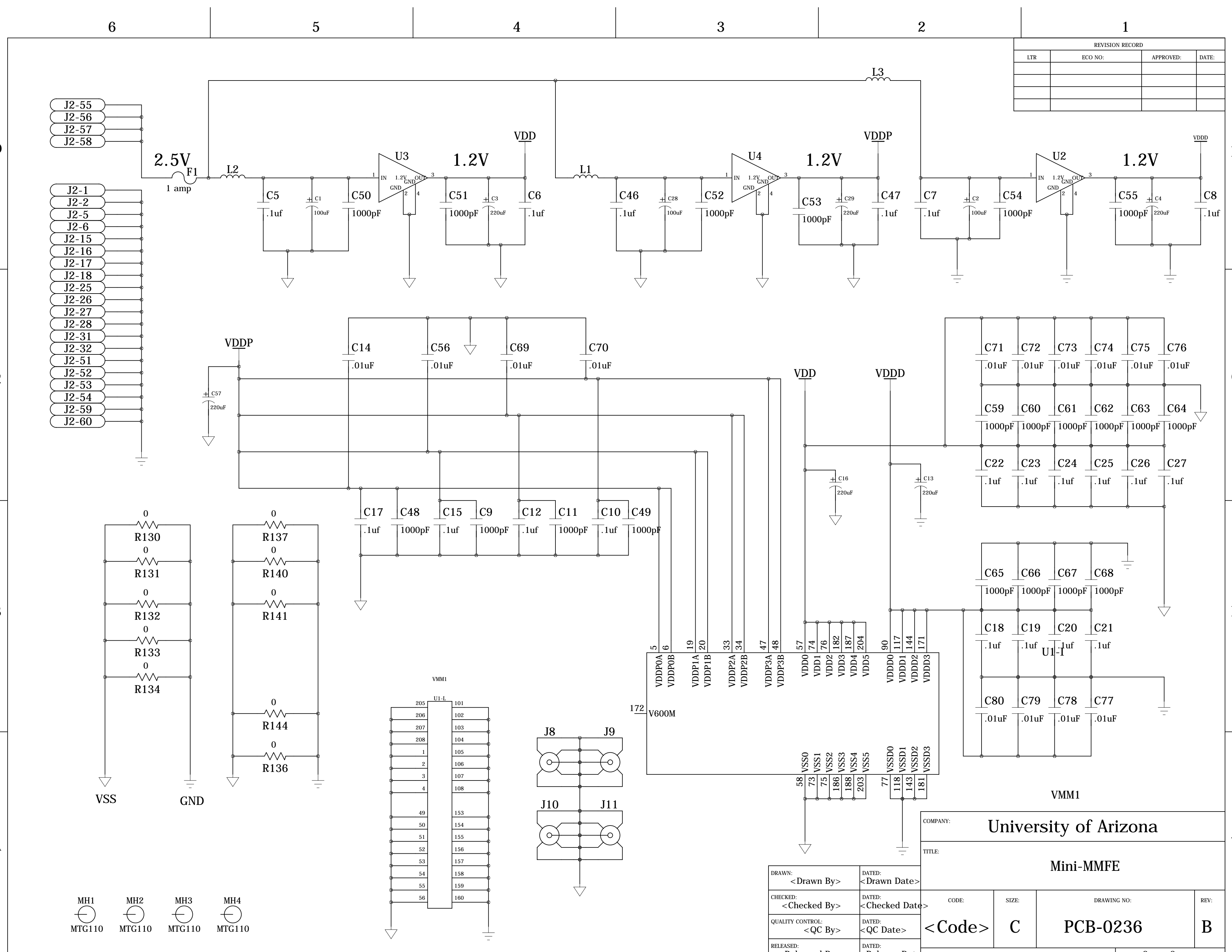
VMM1



DRAWN: <Drawn By>	DATED: <Drawn Date>
CHECKED: <Checked By>	DATED: <Checked Date>
QUALITY CONTROL: <QC By>	DATED: <QC Date>
RELEASED: <Released By>	DATED: <Release Date>

COMPANY: University of Arizona			
TITLE: Mini-MMFE			
CODE: <Code>	SIZE: C	DRAWING NO: PCB-0236	REV: B
SHEET: 7 of 8			

REVISION RECORD			
LTR	ECO NO:	APPROVED:	DATE:

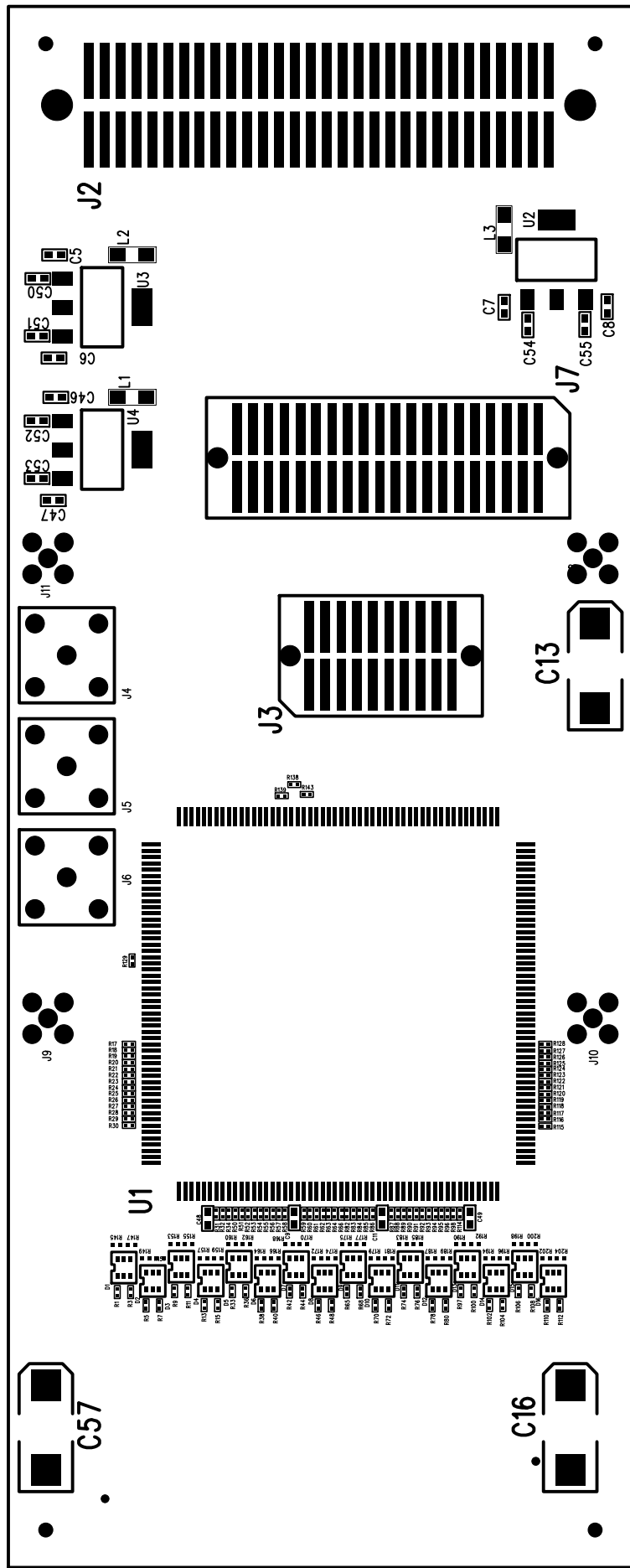


COMPANY: University of Arizona			
TITLE: Mini-MMFE			
CODE: <Code>	SIZE: C	DRAWING NO: PCB-0236	REV: B
DRAWN: <Drawn By>		DATED: <Drawn Date>	
CHECKED: <Checked By>		DATED: <Checked Date>	
QUALITY CONTROL: <QC By>		DATED: <QC Date>	
RELEASED: <Released By>		DATED: <Release Date>	

Bill Of Materials

Bill Of Materials for PCB0236-Mini-MMFE_120502.sch on Thu Jun 14 09:45:16 2012

Item	Qty	Ref	Value	Manufacturer	Part Number	Description
1	1	J1		Panasonic	AXK5SA3277YG	CONN SOCKET BRD/BRD .5MM 130POS
2	1	J2	.5A	Hi rose	FX2-60P-1.27SV(71)	
3	4	J8-11	50 Ohm	Molex	0734151471	CONN JACK MMCX STR PCB
4	24	C5-8 C10 C12 C15 C17-27 C46-47 C82 C85 C88 C91	.1uF	TDK	C1005X5R1A104K	CAPACITOR, SURFACE MOUNT, 0402 size
5	16	C30-45	.1uF	Panasonic	ECJ-ZEBOJ104K	CAP CER .10UF 50V X7R 20% 040
6	18	C14 C56 C69-81 C84 C87 C90	.01uF	Kemet	C0402C103K4RACTU	0402 Ceramic Cap X7R
7	24	C9 C11 C48-55 C59-68 C83 C86 C89 C92	1000pF	TDK	C1005X7R1E102K	CAP CER 1000PF 25V X7R 0402
8	3	C1-2 C28	100uF	Kemet	A700V107M006ATE015	CAP ALUM 100UF 6.3V 20% SMD 15m Ohm
9	6	C3-4 C13 C16 C29 C57	220uF	Kemet	A700V227M002ATE007	CAP ALUM 220UF 2V 20% SMD 7m Ohm
10	3	L1-3	220@100MHz	Murata	BLM21PG221SN1D	Surface Mount Ferrite Bead
11	1	F1	1 amp	Littell fuse	154.001	
12	3	J4-6	4A		EPL.00.250.NTN	LEMO RECPT RA PCB COAX 50 OHM
13	4	MH1-4				
14	16	D1-16		ON Semi conductors	NUP4114UPXV6T1G	
15	3	U2-4	1.2V	Microp Technology	MCP1826S-1202E/DB	IC LDO REG 1A 1.2V SOT223-3
16	128	R1-128	24.9	Panasonic	ERJ-1GEF24R9C	
17	6	R129 R135 R138-139 R142-143	100	Panasonic	ERJ-1GEF101C	Resistor 0402 Thick Film
18	64	R209-272	49.9	Panasonic	ERJ-1GEF49R9C	
19	64	R145-208	10.0M	Panasonic ECG	ERJ-1GEJ106C	RES 10M OHM 1/20W 5% 0201 SMD
20	10	R130-134 R136-137 R140-141 R144	0	Panasonic ECG	ERJ-6GEYOR00V	0805 Resistor 1/8W Thick Film
21	1	J3		TE Connectivity	104655-3	CONN HEADER 20POS .050 VERT SMD
22	1	J7		TE Connectivity	104655-5	CONN HEADER 40POS .050 VERT SMD
23	1	U1		BNL	VMM1	64 Channel ASIC for interfacing MM



LAYER: TOP

Contact: Dan Tompkins 520-621-3069

Material: Rodgers 4003

Модель: 93YA
Контактная группа: 052-128-800
Идентификатор: 004E

