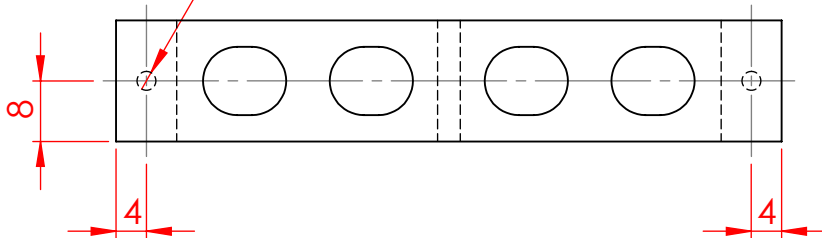


2 x ϕ 2.500 ∇ 7.500
 M3x0.5 - 6H ∇ 6



NOTES:

1. ALL DIMENSIONS IN MM
2. USE EXISTING TIEBAR PARTS
3. QTY: 5

UNLESS OTHERWISE SPECIFIED: DIMENSIONS ARE IN MILLIMETERS SURFACE FINISH: TOLERANCES: LINEAR: ANGULAR:			FINISH:		DEBUR AND BREAK SHARP EDGES		DO NOT SCALE DRAWING		REVISION																				
NAME						SIGNATURE						DATE						TITLE:											
DRAWN						CHK'D						APPV'D						MFG						TieBarKaption					
Q.A						MATERIAL:						DWG NO.																	
						G-10						AZHF021						A4											
WEIGHT:						SCALE:1:2						SHEET 1 OF 1																	