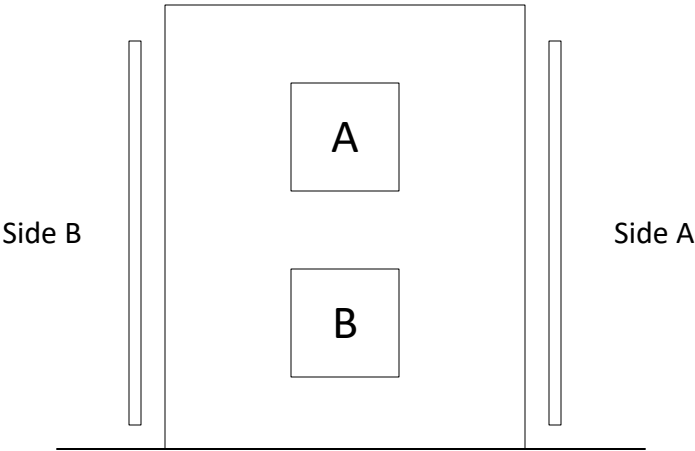
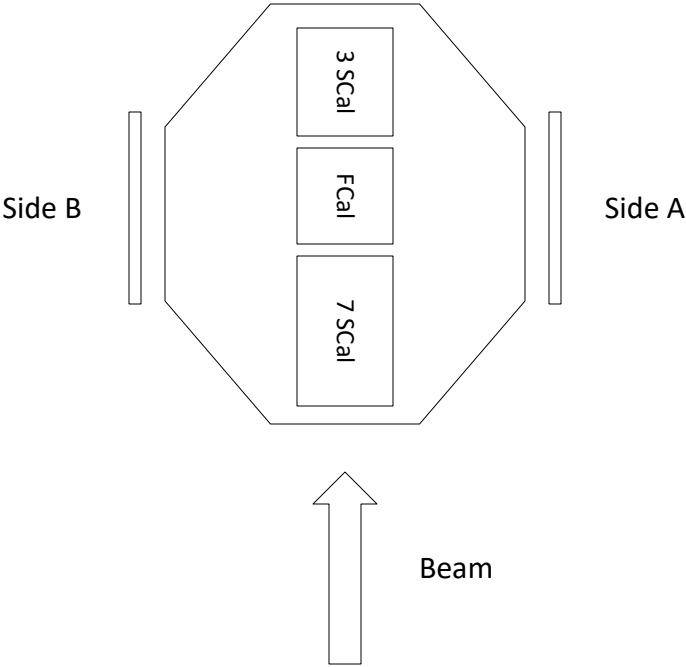


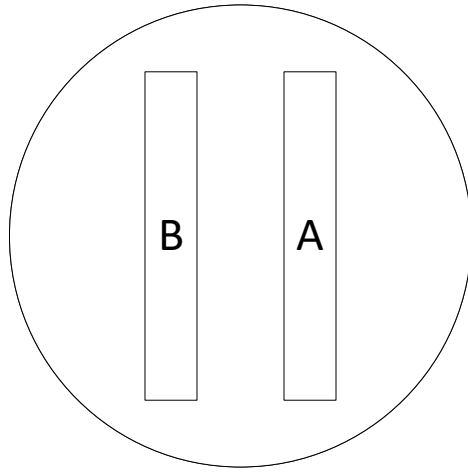
Test Beam 2021 - Wiring Map

CERN

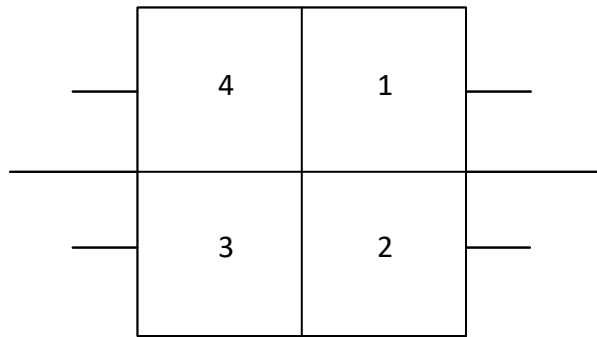
2021/07/30



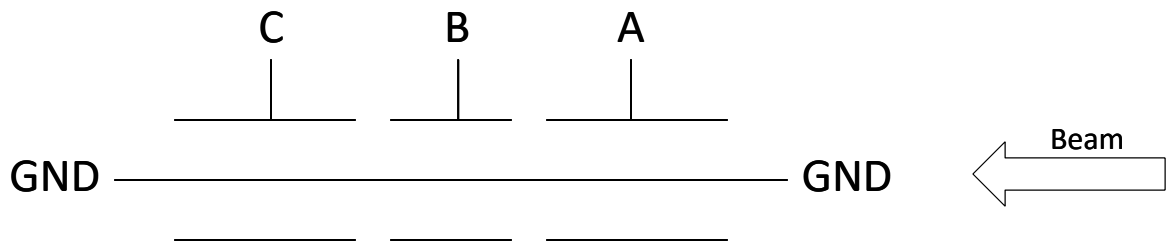
Signal Feedthrough



SCal Wiring



FCal Wiring



Testbeam 2021 Wiring Map
 2021 July 30
 CERN

| Digitizer | Digitizer Ch | FAMP FT | FAMP Ch | Cold Board | Cold Board Ch. | Module | Position** |
|-----------|--------------|---------|---------|------------|----------------|---------|--------------|
| AZ | 0 | A | 1 | A | FCal-A | FCal-A | A |
| AZ | 1 | A | 2 | A | FCal-B | FCal-A | B |
| AZ | 2 | A | 3 | A | FCal-C | FCal-A | C |
| AZ | 3 | A | 4 | A | SCal-A | SCal-7A | 1 |
| AZ | 4 | A | 5 | A | SCal-B | SCal-7A | 2 |
| AZ | 5 | A | 6 | A | SCal-C | SCal-3A | 1 |
| AZ | 6 | A | 7 | A | SCal-D | SCal-3A | 2 |
| AZ | 7 | A | 8 | A | SCal-E | SCal-7B | 1 |
| Triumf | 0 | A | 9 | A | SCal-F | SCal-7B | 2 |
| Triumf | 1 | A | 10 | A | SCal-G | SCal-3B | 1 |
| Triumf | 2 | A | 11 | A | SCal-H | SCal-3B | 2 |
| Triumf | 3 | B | 1 | B | FCal-A | FCal-B | A |
| Triumf | 4 | B | 2 | B | FCal-B | FCal-B | B |
| Triumf | 5 | B | 3 | B | FCal-C | FCal-B | C |
| Triumf | 6 | B | 4 | B | SCal-A | SCal-7A | 3 |
| Triumf | 7 | B | 5 | B | SCal-B | SCal-7A | 4 |
| CERN | 0 | B | 6 | B | SCal-C | SCal-3A | 3 |
| CERN | 1 | B | 7 | B | SCal-D | SCal-3A | 4 |
| CERN | 2 | B | 8 | B | SCal-E | SCal-7B | 3 |
| CERN | 3 | B | 9 | B | SCal-F | SCal-7B | 4 |
| CERN | 4 | B | 10 | B | SCal-G | SCal-3B | 3 |
| CERN | 5 | B | 11 | B | SCal-H | SCal-3B | 4 |
| CERN | 6 | | -- | -- | -- | -- | Scintillator |
| CERN | 7 | | -- | -- | -- | -- | Scintillator |

Signal FT-A = FAMP 11-2
 Signal FT-B = FAMP 11-5

| HV FT | Cold Board Connection* |
|-------|------------------------|
| 1 | A |
| 2 | B |
| 3 | C |
| 4 | S |

*Both Cold Boards wired together

| Calibration Line | Cold Board | Cold Board Connection |
|------------------|------------|-----------------------|
| 2 | A | RT |
| 4 | A | S |
| 7 | B | RT |
| 8 | B | S |

**Need to verify upon cryostat opening